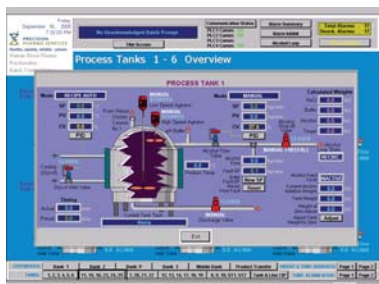


## Control & Power Systems

Established in 1979, Control & Power Systems, Inc. (CPS) specializes in Automation Engineering, Validation Services and Skid & Panel Fabrication for customers in the Specialty Chemical, Pharmaceutical, Food & Beverage, Water & Wastewater and Environmental Control industries.

CPS maintains a 15,000 square foot UL508A listed fabrication facility, with a clear working height of 22 feet, and areas for project staging and factory acceptance testing. A team of over 40 staff consisting of electrical and mechanical engineers, programmers, CAD designers, validation experts, instrumentation and calibration technicians and shop craftsmen enables CPS to "design and build" as a single-source supplier.



- SCADA Configuration
- PLC Programming
- DCS Configuration
- PID Loop Tuning
- S-88 Batch Software
- Plant Data Historians
- Automated Traceability
- Wiring Diagrams

- Electrical and Pneumatic Control Panel Assembly
- Motor Control Cabinets, Consoles, Sheds
- Blending and Feed Process Skid Fabrication
- Installation Supervision
- Startup / Commissioning
- Instrument Calibration
- Validation Documents
- O & M Documentation
- Remote Monitoring
- Spare Parts Supply



**Experienced Personnel + Proven Track Record**



### Contact:

David Lyon, Vice President  
Control & Power Systems, Inc.  
17 Spielman Rd., Fairfield, NJ 07004  
Toll-free: 800-305-1600  
Phone: 973-575-3300 Ext. 14  
Email: david.lyon@c-p-s.com  
Web: www.c-p-s.com

## E<sup>2</sup>M / Polytron



Geoff Mueller, Simulation Engineer

### LEADERS IN SYSTEMS INTEGRATION

The **E<sup>2</sup>M and Polytron alliance** forms a Packaging and Manufacturing System Integration group with 20+ years of experience, serving the Food, Beverage, Consumer Products and Pharmaceutical markets.

**E<sup>2</sup>M** focuses on Project Management, Consulting, Modeling, and the Mechanical Packaging System Engineering portion of our projects while **Polytron** provides the Power, Automation, Information Systems, and Training expertise.

Through their Total System Solution approach and the dedication of their professional staff, the E<sup>2</sup>M and Polytron alliance focuses on managing your risks while ensuring your business objectives are met with a project that has been skillfully designed, engineered and executed, and operators that are fully trained and ready from day one.

E<sup>2</sup>M/Polytron defines **Systems Integration** as a full portfolio of services that cover all aspects of a manufacturing facility – from feasibility through post start-up activities! Our services include:

- Business Planning and Project Impact Analysis
- Packaging System Design
- Process and Utility System Integration
- Warehouse Design and Analysis
- Equipment and Installation Procurement
- Control Systems Design & Development
- Modeling Services (PolySim<sup>SM</sup> – Simulation and Emulation)
- Project and Construction Management
- Startup, Training, and Customer Support Services

**E<sup>2</sup>M/Polytron is an organization of professionals who are focused on the development and implementation of efficient, cost effective, highly operable and maintainable manufacturing and packaging systems.**



**PARTNERS IN PACKAGING**

### Contact:

Don Baldwin  
Brent Stromwall  
E<sup>2</sup>M/Polytron  
6734 Jimmy Carter Boulevard, Norcross, GA 30071  
1-800-622-4326  
www.polytron.com • www.e2m.com • www.polysim.net