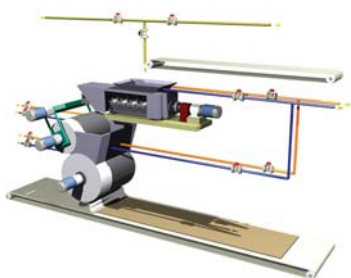


Prism Systems, Inc.

Providing world-class systems design & integration services to Fortune 500 companies since 1989, Prism Systems delivers expert automation, control and software development services to customers across the globe in a variety of industries. Delivering successful projects on-time and within budget has made Prism Systems a premier supplier to some of the largest food & beverage companies in the world.



With extensive experience utilizing almost every major brand of control platform (including Siemens, Rockwell/Allen-Bradley, Modicon, GE Fanuc, and others) we can provide a best-of-breed system designed to meet your project's specific requirements. Additionally, we maintain close relationships with key control technology providers. Prism Systems corporate/partner affiliations include:

- Siemens Solution Partner
- Rockwell Systems Integrator
- Wonderware ArchestrA Certified SI
- Microsoft Certified Partner
- OSI Independent Software Vendor/Systems Integrator

Comprehensive Solutions

- Project Design and Management: Design, Implementation, Start-Up & Training
- Process Control: Batch & Continuous
- Motion Control: Packaging, Conveyors, Material Handling/Sorting
- Warehouse/Distribution Automation Systems
- PLC, DCS and hybrid control solutions
- Operator Interface Design and Implementation
- Recipe Control: Custom and canned packages
- Data Warehousing and Mining
- Process Representation and Modeling
- Web-Based Reporting Systems
- Product/WIP Tracking Systems
- Process Historian Systems

Food Experience

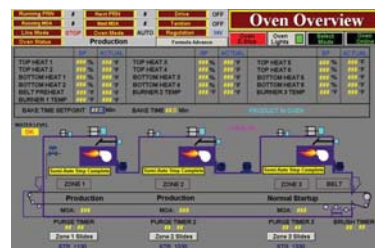
- Pet Food Production
- Processed Cheese Manufacture
- Bar Lines
- Chocolate/Caramel production
- Nut Roasting
- Grains Handling
- Cigar Production
- Canning (tuna fish, green beans, sodas, etc)
- Rice Production and Handling
- Automated CIP



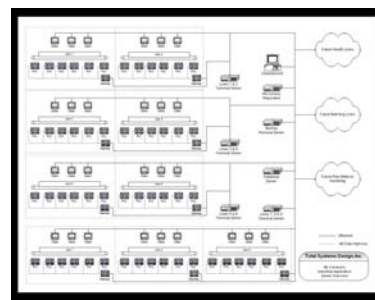
For more information about Prism Systems visit:
<http://www.prismsystems.com>

Total Systems Design, Inc.

Total Systems Design is an innovative, full service control and information systems integrator with a long history of success, and broad-based industry experience. Our primary focus and core competencies are in the food and life sciences industries.



TSD has long-term strategic alliances with major software and hardware vendors which are fueling unprecedented growth. Our elite certifications with these partners, who command expansive market share, have positioned TSD in the center of a steadily expanding project stream, generating high demand for our automation and information systems integration services.



TSD's MES resources are providing clients with manufacturing intelligence, tracking and genealogy, SPC / SQC, OEE, EBR and other system solutions.

TSD's approach is 'bottom-up', providing building block solutions tailored to meet specific client needs, starting at the plant floor and connecting up into ERP systems, including SAP. This approach is far more cost effective and adaptive to client operational requirements than big 'top-down' packaged solutions, allowing clients to build a flexible, comprehensive plant-wide system over time employing a less costly and more manageable phased approach.

A key to success is our ability to integrate with legacy systems on the plant floor, protecting and leveraging the client's long-term investments to deliver accurate, real-time production information to the right people at the right time.

TSD has offices in West Chester, PA, Raleigh, NC, San Juan, Puerto Rico, Singapore, and Dublin and is a member of Automation Alliance Group (AAG).



Contact:

Total Systems Design, Inc.
 901 South Bolmar Street
 West Chester, PA
 484-356-0288
 484-356-0293 (fax)
www.totalsystemsdesign.com

